



PILLOW  
YP-01



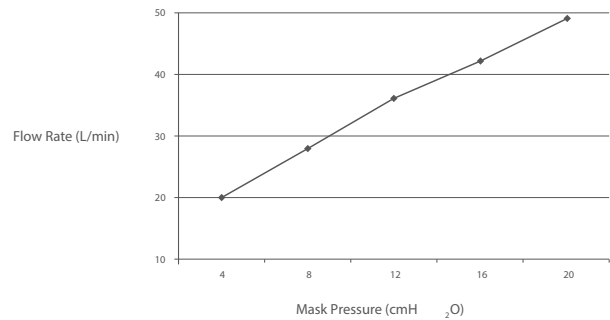
TECHNICAL SPECS

Service pressure range: 4-20 cm H<sub>2</sub>O  
Net Weight: 81 gr  
Connection tube: 22mm (diameter)  
Flow Resistance (50LPM): <1.cm H<sub>2</sub>O  
Flow Resistance (100LPM): <3.5cm H<sub>2</sub>O  
Pressure sound level: <23dB (A)  
Dead space: <16ml  
Certification: CE

MAIN FEATURES

Adjustable Headgear with straps  
Soft silicon cushion  
Silent expiration system  
Without forehead support  
3 sizes in one box

PRESSURE-FLOW CURVE

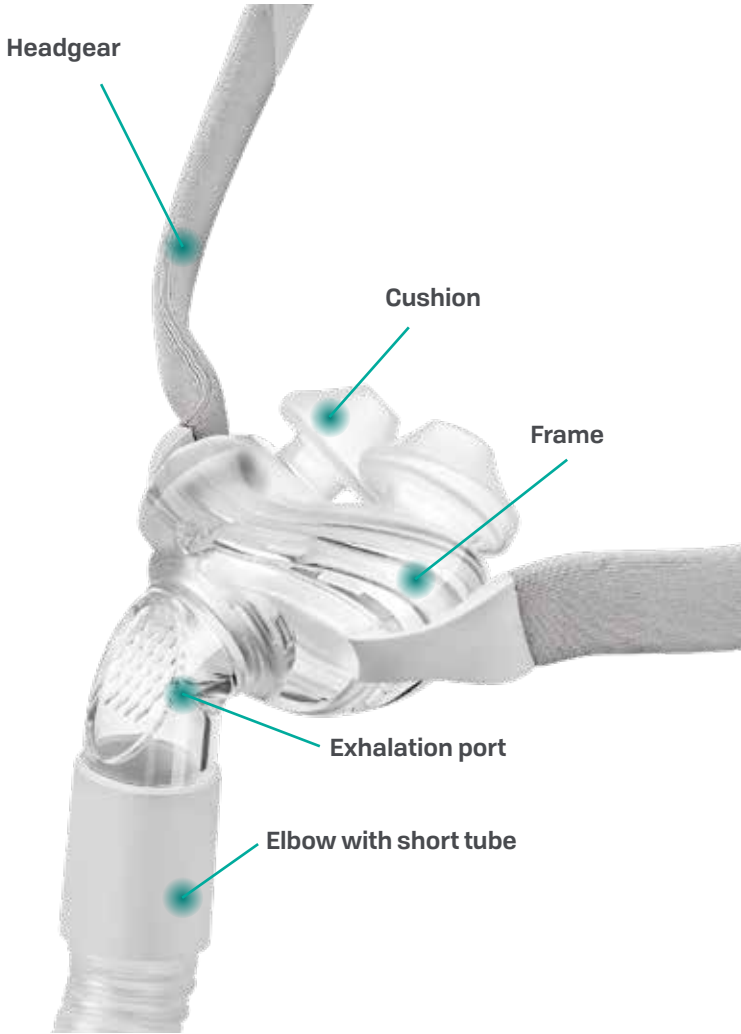


ORDERING INFORMATIONS

Part Number	Model	Size
MDA2MPM001	YP-01	S-M-L

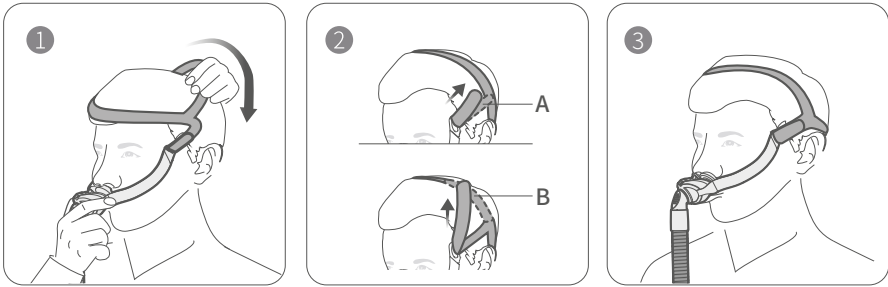


PILLOW  
YP-01



FITTING

Use a standard conical connector if pressure readings and / or supplemental oxygen are required.



1. Hold the mask steadily on your face and pull the headgear over your head.
2. Undo the fastening tabs on the headgear straps. Pull the straps evenly towards the top of head or above ears until the mask is stable and comfortable. Reattach the fastening tabs.
3. Your mask and headgear should be positioned as shown in the illustration.

**Note**  
Connect the device air tubing to the swivel of mask and ensure it is firmly connected.